

WSMA High School State Honors Music Project

2020 String Bass Audition Requirements

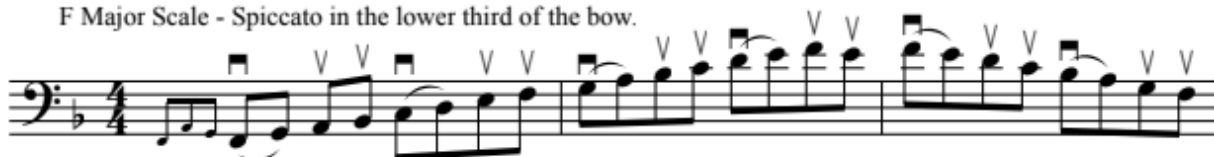
SCALES

Memorize and play the scales below with the indicated bowings in two octaves when possible.

Please Note: The scales below are the required scales with the required bowings. Scales may be performed in any method that meets the correct scale and bowing requirements. The added notes at the beginning are intended as a suggestion to facilitate the bowing and not a requirement of the audition.

Suggested Scale Pattern for String Bass Auditions

F Major Scale - Spiccato in the lower third of the bow.



G Major Scale - Staccato in the middle of the bow.



A Major Scale - Detaché



B \flat Major Scale - Whole bow for each slur.



C Major Scale - Spiccato in the lower third of the bow.

